



Ibbett Mosely



## Granville Road, Westerham, TN16 1RX

### Asking Price £560,000 Freehold

An older style, extended three bedroom family home located in a sought after location within walking distance of the town centre. Standing to the back of a central green the house enjoys beautiful views over Westerham and the hills beyond.

- Three Bedrooms
- Dining Room
- Cloakroom and Utility Room
- Parking Space and Front and Back Gardens
- Bathroom
- Breakfast Room
- Gas Central Heating
- Living Room
- Kitchen
- Double Glazing

Located in a sought after residential development this older style three bedroom extended semi-detached family home comes highly recommended. The property enjoys views to the front, not only over a central green but beyond over Westerham and the North Downs.

Extended in recent years for the current owners the property has brick elevations under a mainly tiled roof with gas central heating and double glazed windows and doors.

#### LOCATION

Granville Road is located close to the centre of Westerham, which has a great mix of eateries, boutiques and local stores, ensuring a strong local community and thriving town for visitors attracted to its quaint and historic associations.

Oxted (5 miles) and Sevenoaks (7 miles) provide rail services to London Victoria (39 minutes) and London Bridge (32 minutes), and a further selection of shopping, eateries, entertainment and leisure facilities.

The national motorway network is easily accessed via the M25 at Sevenoaks (J 5) and Godstone (J 6).

#### GROUND FLOOR

##### ENTRANCE HALL

With radiator, double glazed entrance door and storage under the stairs.

##### LIVING ROOM

With radiator, double glazed bay window to the front, timber surround and mantle to a fireplace with fitted multi fuel burning stove.

##### DINING ROOM

With radiator and double glazed window to the front.

##### BREAKFAST ROOM

With radiator.

##### KITCHEN

Fitted with a range of base and wall units, single drainer single bowl stainless steel sink unit. Space for gas cooker with extractor over. Integrated fridge and freezer, pull out waste storage bin, radiator, part tiled walls, double glazed window and double glazed door to the garden.

### UTILITY ROOM

Fitted with a base unit, plumbing for washing machine, wall cupboard and wall mounted gas boiler for heating and hot water.

### CLOAKROOM

With w.c, hand basin with cupboard under, chrome ladder style towel rail, extractor fan and double glazed window.

### FIRST FLOOR

#### LANDING

With hatch to the loft space and double glazed window.

#### BEDROOM ONE

With radiator, double glazed windows allowing views over Westerham and the hills beyond. Linen cupboard with hot water cylinder and shelving.

#### BEDROOM TWO

With radiator, double glazed window allowing views over Westerham and the hills beyond. Wardrobe cupboard.

#### BEDROOM THREE

With radiator and double glazed window.

#### BATHROOM

With enclosed bath, w.c. and hand basin. Part tiled walls, radiator and double glazed window.

#### OUTSIDE

To the front of the house is a **PARKING SPACE** for one vehicle, a path which also serves 33 Granville Road leads to the front door, to the side of the path, the front garden includes a lawn and plant and shrub borders.

The back garden includes a lawn, patio, garden shed and further plant and shrub borders.

### SERVICES AND COUNCIL TAX

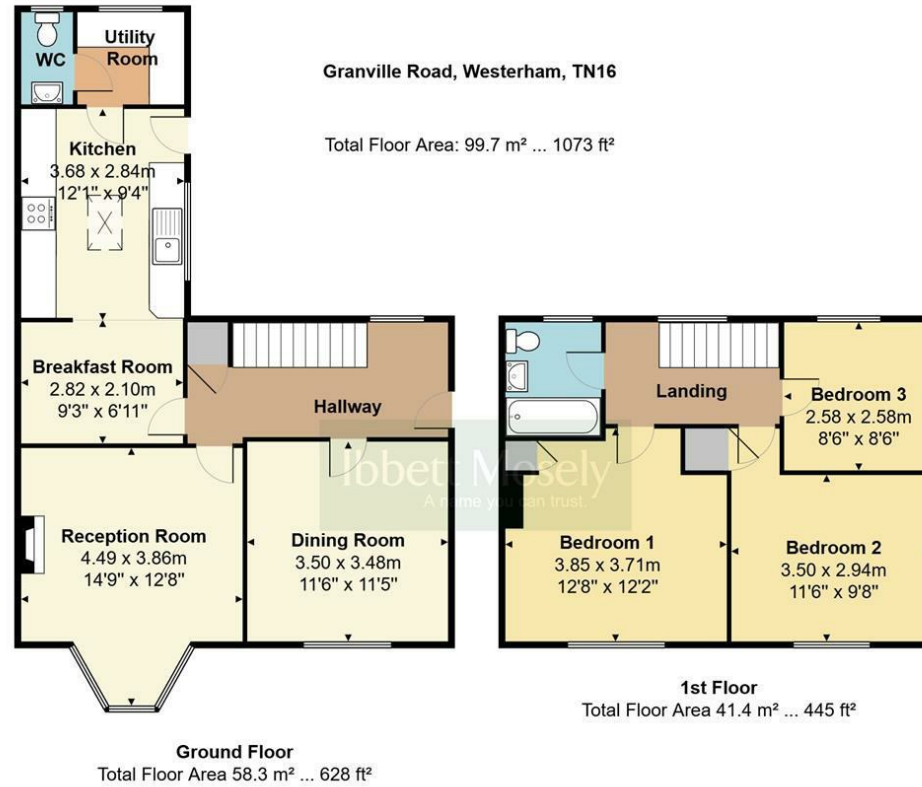
Mains gas, water, electricity and drainage.  
Sevenoaks District Council - Band "D"

### DIRECTIONS

Leave Westerham on the A25 towards Oxted, pass Croydon Road and Stratton Terrace on the right and then take the next right into New Street. Follow New Street into Farley Nursery/Westbury Terrace and then right into Granville Road, turn left before the green and the property will be located at the back of the green



# EPC Rating- C



Westerham 01959 563265

Offices at - BOROUGH GREEN - OTFORD - SEVENOAKS - SOUTHWARK  
TONBRIDGE - WESTMINSTER - WESTERHAM - WEST MALLING

[www.ibbettmosely.co.uk](http://www.ibbettmosely.co.uk)

IMPORTANT - Ibbett Mosely, for themselves and for the vendors or lessors of this property whose agents they are give notice that (i) these particulars are set out as a general outline only for guidance of intending purchasers or lessees, and do not constitute, nor constitute part of an offer or contract; (ii) all descriptions, dimensions references to condition and necessary permissions for use and occupation, and other details are given without responsibility and any intending purchasers or tenants should not rely on them as statements or representations of fact but must satisfy themselves by inspection or otherwise as to the correctness of each of them; (iii) no person in the employment of Ibbett Mosely, has any authority to make or give any representation or warranty whatever in relation to this property. ver 3.0.

...a name you can trust  
offices in Kent and London